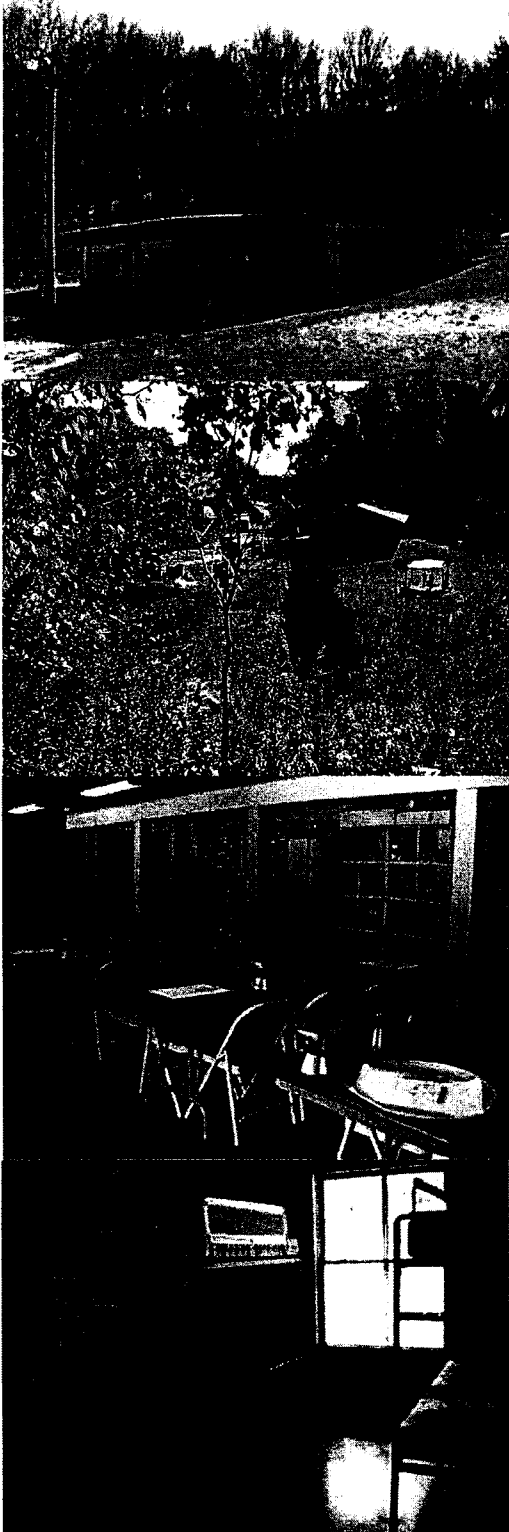




Center for American Archeology MacDougall Dormitory & Classroom



MacDougall Dormitory & Classroom, named for Winnetka, Illinois teacher and longtime CAA supporter Genevieve MacDougall, is the hub of the CAA's Education Program.

The downstairs area, originally constructed as a garage, serves as classroom space, and the upstairs, added in the mid 1990s, contains sleeping quarters. Separate shower/restroom facilities are provided for women and men on the ground floor, as well as a small kitchenette containing a refrigerator, hot plate, microwave, and coffee pot.

The upstairs dormitory rooms can accommodate up to 36 people. Two single rooms are located at each end of the central hallway; the remaining rooms contain two sets of metal bunk beds (standard twin mattresses with plastic cover). All rooms have dressers, peg racks, folding chairs, and wall-mounted lockable cubicles for personal storage space. A door in the middle of the hall can be closed to provide space for boys and girls.

The building itself is located in a hollow at the base of a bluff, just outside the main part of Kampsville. The CAA owns 15 acres of land containing oak-hickory forest and an abundance of wildlife. A constructed pond sits behind the dormitory and is fed by a spring on the bluff. A large covered porch area is used as both social and instructional space.

Additional outside structures around MacDougall Dorm include the property's original barn (classroom and storage space), a flintknapping pit, and two gardens. In early 2010, an Eagle Scout candidate from Missouri built a ramada (latticed structure) behind the barn and a trellis for our garden space to support our annual gourd crop.

During the summer, ventilation is provided by industrial whole-floor ceiling fans and window fans; two small AC units are used downstairs. During the cooler months, propane furnaces and portable electric heating units are provided.

While the building is fully modernized, there is no internet access or television. A DVD player and VCR are available for personal use during free time, as is a wide selection of games, cards, books, and puzzles. A telephone landline is available for incoming calls, and outgoing calls are kept to a minimum to ensure access to the building when students are in residence. Cell phone reception, even with the best plans money can buy, is unreliable at the dorm. We strongly suggest that students bring a prepaid phone card.

Linen & bedding service is not provided at our dorms; please bring your sleeping bag/twin-size sheet sets, pillow, and towels.